

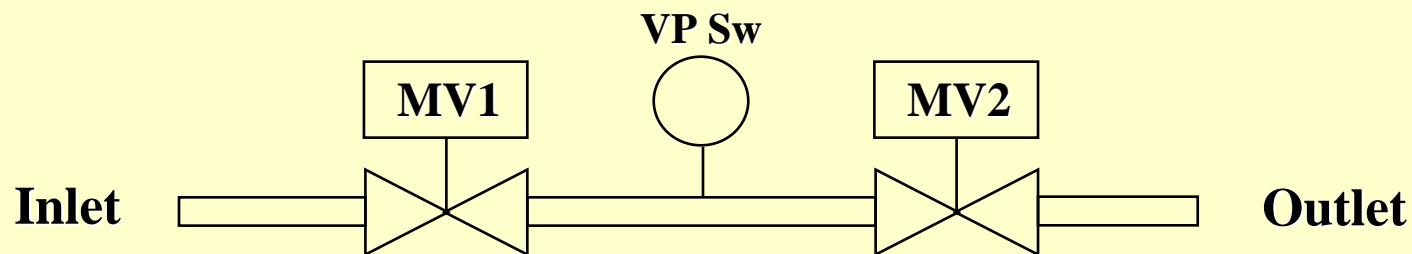
Valve Proving System

VPS

**Test the main safety shut-off
valves for No leakage**

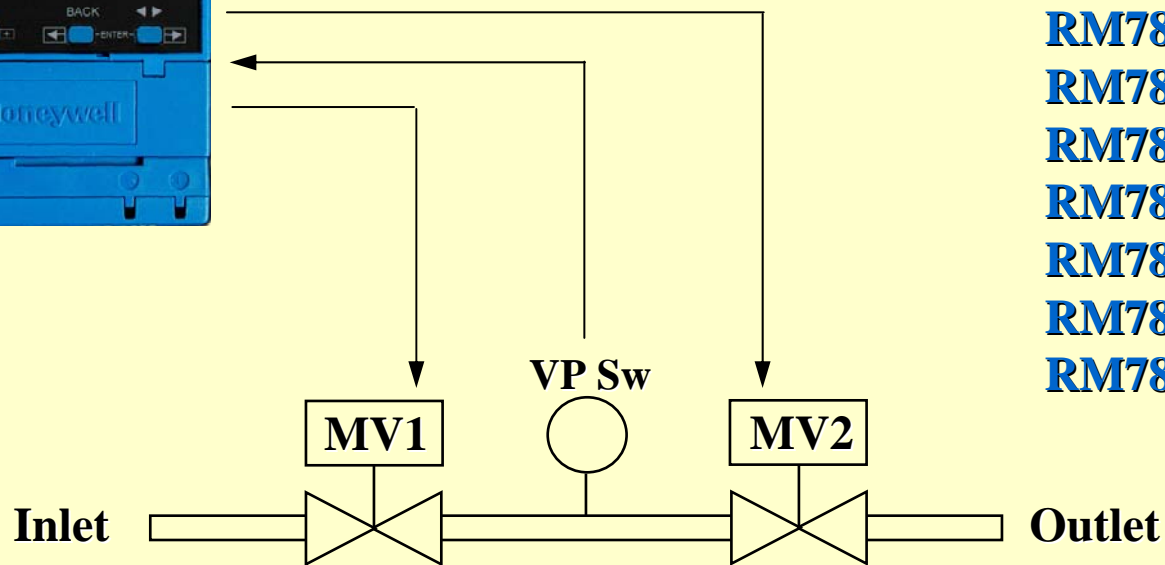
Valve Proving System

Open and close the main safety shut-off valves (double block valve arrangement) in the proper sequence and monitor pressure in the gas pipe between the two safety shutoff valves (MV1 & MV2).



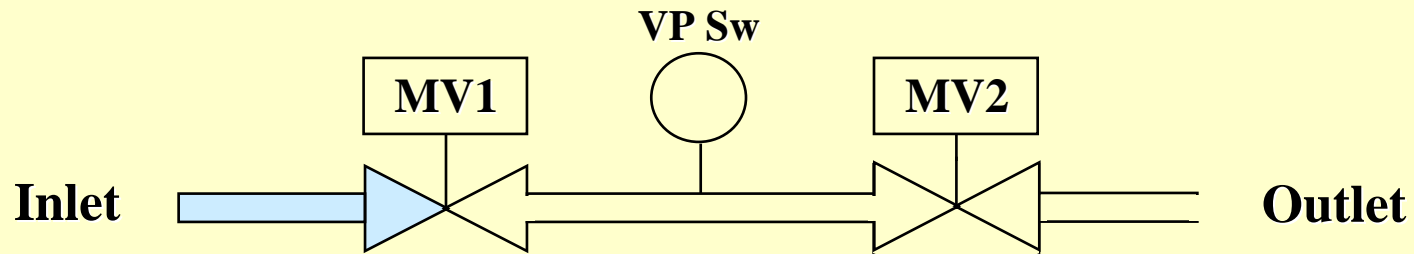
Valve Proving System - VPS

The S7800A1142 KDM must be used to enable and configure the VPS in the enhanced 7800 SERIES relay modules:



RM7890A1056
RM7890B1048
RM7898A1000
RM7898A1018
RM7840G1022
RM7840L1075
RM7800L1087
RM7838B1021
RM7838C1012

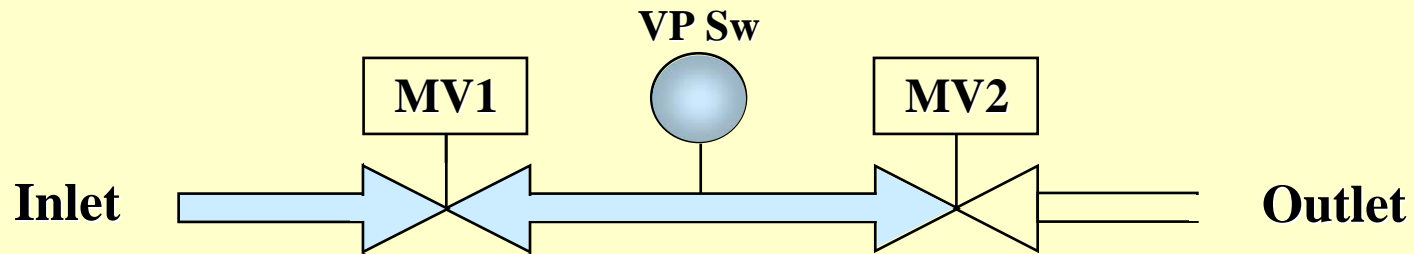
Valve Proving Test



Test MV1

1. **Open MV2 & keep MV1 closed: depressurize the pipe.**
2. **Close MV2**
3. **Leaky MV1 during the test time causes VP Switch to close resulting in a safety shutdown.**

Valve Proving Test



Test MV1

1. Open MV2 & keep MV1 closed: depressurize the pipe.
2. Close MV2
3. Leaky MV1 during the test time causes VP Switch to close resulting in a safety shutdown.

Test MV2

1. Open MV1 and keep MV2 closed: pressurize the pipe.
2. Close MV1
3. Leaky MV2 during the test time causes VP Switch to open resulting in a safety shutdown.